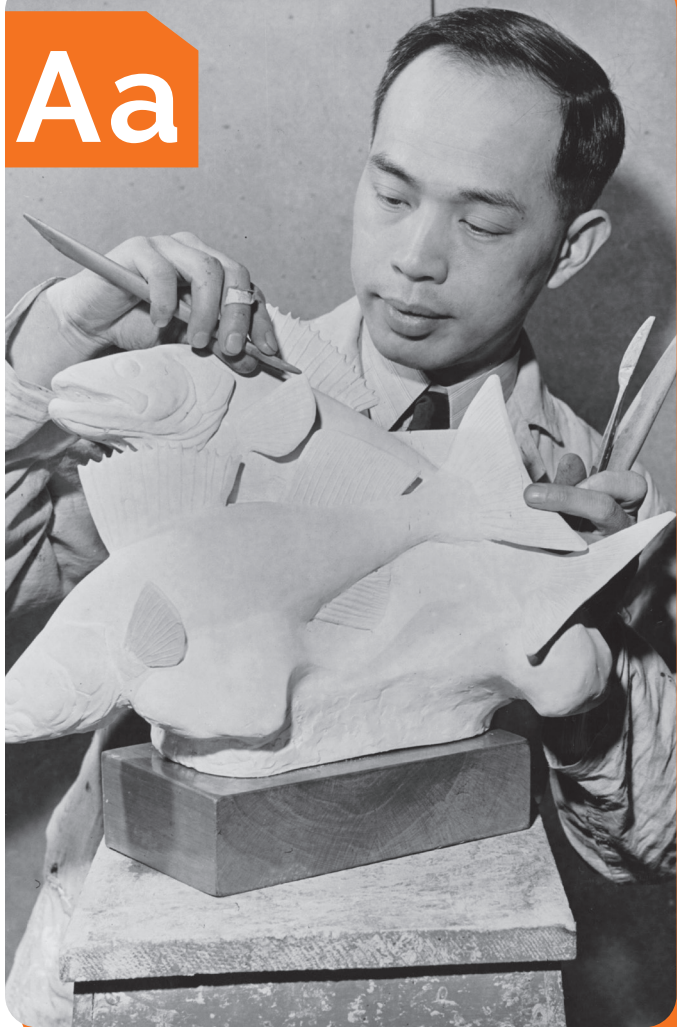


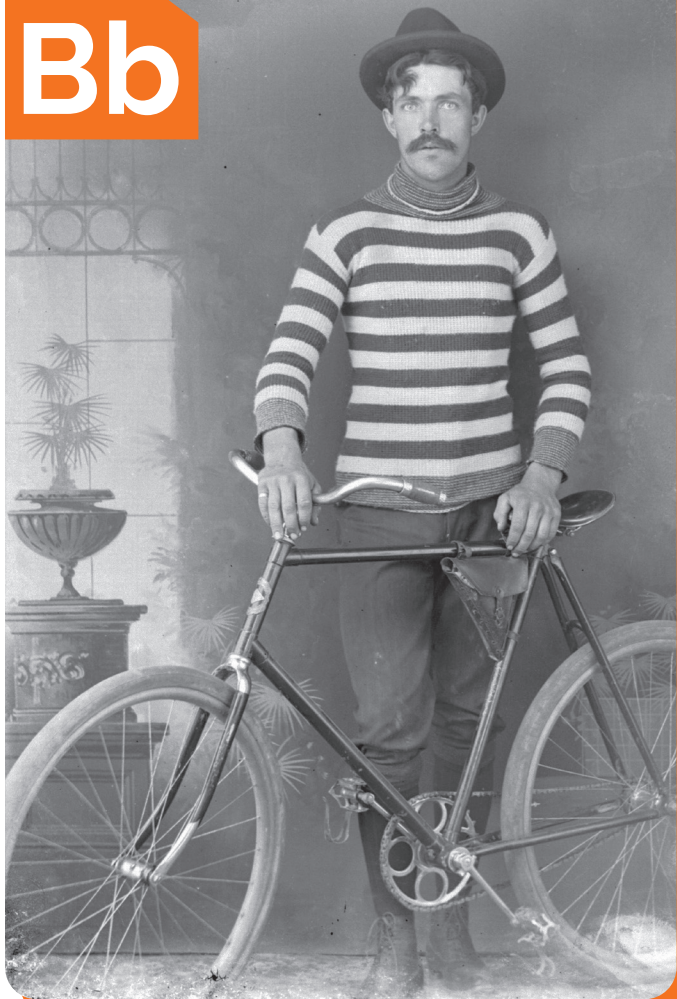
Aa



Sing Hoo was born in Canton (today Guangzhou), China on May 15, 1911 and emigrated to Calgary, Alberta in 1922. In 1933, he graduated from the Ontario College of Art. During his long career as a sculptor, he helped create the Sir Adam Beck monument in Toronto, worked at the Paleontology Department of the Royal Ontario Museum, studied fine art in London (England), and travelled to China to lecture on Canadian art.

Sing Hoo with sculpture "Happy Pair,"
1947 (I0010398)

Bb



The development of the “safety bicycle” in the late 19th century was a major improvement over earlier models: the chain-driven rear wheel, steerable front wheel, and equally-sized wheels helped make cycling a safer, more pleasant experience for all.

Man with a bicycle, ca. 1900 (I0002502)

Bb

Bicycle

Cc



For generations, canoes have been a necessity for the Ojibwa living around Lake St. Joseph and the Albany River. Light and maneuverable, birchbark canoes are perfectly adapted to summer travel through the network of streams, ponds, lakes and swift rivers in northwestern Ontario.

"Maria Mikenak in canoe she built near Osnaburgh House, Albany River,"
1956 (I0000374)

Dd



A fife and drum corps is a musical group consisting of flutes and rope-tension snare drum players, used by military organizations to accompany groups of soldiers while on the march or in camp.

York Bd. [Board of Education] - fife and drum at Fort York, June 1984
(C 193-4-1-74)

Dd

Drum

Ee



Egg grading has been an established practice in Canada since the 1940s, to ensure the quality and safety of chicken eggs sold to consumers. This photograph shows harvested eggs being candled - the eggs are rolled over a light, making it easier to see interior defects and cracks in the shell. Eggs that are cracked, dirty, or leaking have a higher risk of Salmonella contamination and are removed by the inspector, while the best eggs proceed to the scales to be weighed and sorted by size.

Woman inspecting eggs,
November 8, 1988 (I0003218)

Ff



This photograph shows the Moriyama family, from British Columbia. Their son, Raymond (1929-), is an award-winning architect. Shortly after this photograph was taken, the family was sent to an internment camp in British Columbia with other Canadians of Japanese descent during World War II. The Moriyamas later settled in Hamilton, Ontario; Raymond went on to study at the University of Toronto and McGill University.

Family portrait of Raymond Moriyama,
his parents and sister Joan,
December 20, 1935 (I0020988)

Gg



The Hudson Bay Company established Lansdowne House as a trading post on the shore of Attawapiskat Lake in 1850. The local Oji-Cree families, referred to by settlers as the Lansdowne House Indian Band after signing the James Bay Treaty in 1905, are today known as Neskantaga First Nation.

Playing for a square dance at Lansdowne House, 1956 (I0000389)

Hh



Conn Smythe—best known as the owner of the Toronto Maple Leafs hockey team from 1927–1961—also owned many horses. Smythe's horses won 145 races during his lifetime, including the Queen's Plate—twice.

Two of Conn Smythe's horses, ca. 1975 (I0018109)

Hh

Horse

ii



“Table Rock” was once a large shelf of rock that stuck out from the Canadian shore of Niagara Falls, Ontario. During the winter months, the mists from the Falls cause the shelf and surrounding areas to be covered with large hanging icicles and a thin layer of ice.

Formations back of Table Rock, ca. 1920 (I0012397)

Jj



The horse shown in this picture was one of a pair owned by J.W. Gorman, an American entertainer. In the early 20th century, Hanlan's Point was home to a popular amusement park and water shows. In an era when performing animals were common and animal welfare was still a new idea, diving horses had become a popular form of entertainment. The popular show involved horses walking up a ramp to the top of the diving platform, then jumping into the water below.

The diving horse display, Hanlan's Point,
Toronto Island, ca. 1910s (I0003746)

Kk

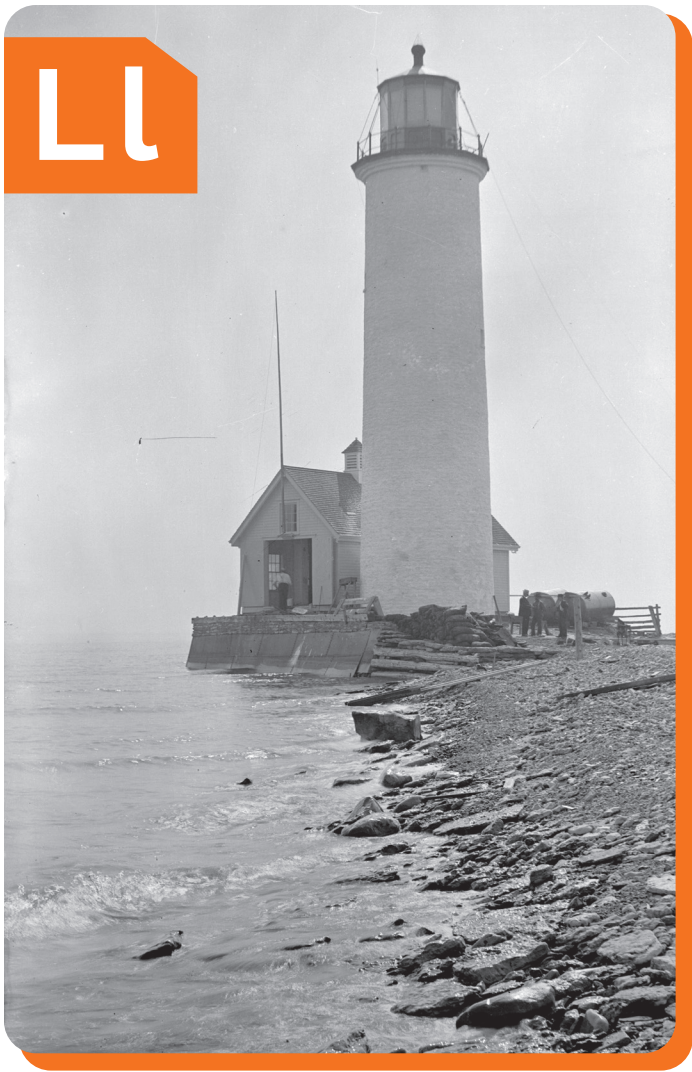


In 1916, the Women's College Hospital and Dispensary opened its second location in Toronto in a three-storey house with 25 beds, 10 cots for children, a full kitchen, and an x-ray department. In an era when careers in teaching and hospital practice were extremely limited for women, Women's College Hospital offered them opportunities in the field.

Main hospital kitchen at the Woman's College Hospital
on Rusholme Road, Toronto, 1927 (I0006593)

Kk**Kitchen**

LL



Erected in 1837, the Nine Mile Point Lighthouse was built to guide ships navigating Lake Ontario at the entrance to the St. Lawrence River. The lighthouse remains active today and flashes its white light every ten seconds.

[Nine Mile Point] Lighthouse,
ca.1900, (I0013543)

LL

Lighthouse

Mm



Kensington Market is an open-air food and clothing market in downtown Toronto. Since the 1850s, the area has seen different waves of newcomers, from upper-middle class British settler Victorian families (mid-19th century), to Jewish and Italian immigrants (mid-19th to early-20th centuries), Portuguese immigrants (1950s), Indian, Chinese, Korean, Vietnamese and Filipino immigrants (1970s), and Latin American refugees (late 1980s).

Farm produce, Kensington Market, Toronto, July 19, 1986 (I0003235)

Mm**Market**

Nn



Until the mid-1940s, Black women who wanted to train as nurses in Canada had few options, as medical schools refused to admit non-white nursing students. With more women entering the workforce in Ontario after World War II, though, pressure from church groups and trade associations helped push back against such racist policies. The first cohort of Black Canadian registered nurses graduated from nursing schools in the early 1950s.

Nurses at new Mount Sinai Hospital, Toronto, 1965 (I0013833)

Oo



The Screech Owl (*Megascops asio*) is common in Eastern North America. These small, nocturnal birds hunt from perches, often in an old tree, using their excellent hearing to locate their victims, usually in open woodland.

"A screech owl, removed from its hole in High Park, Toronto," 1918 (I0022051)

Oo

Owl

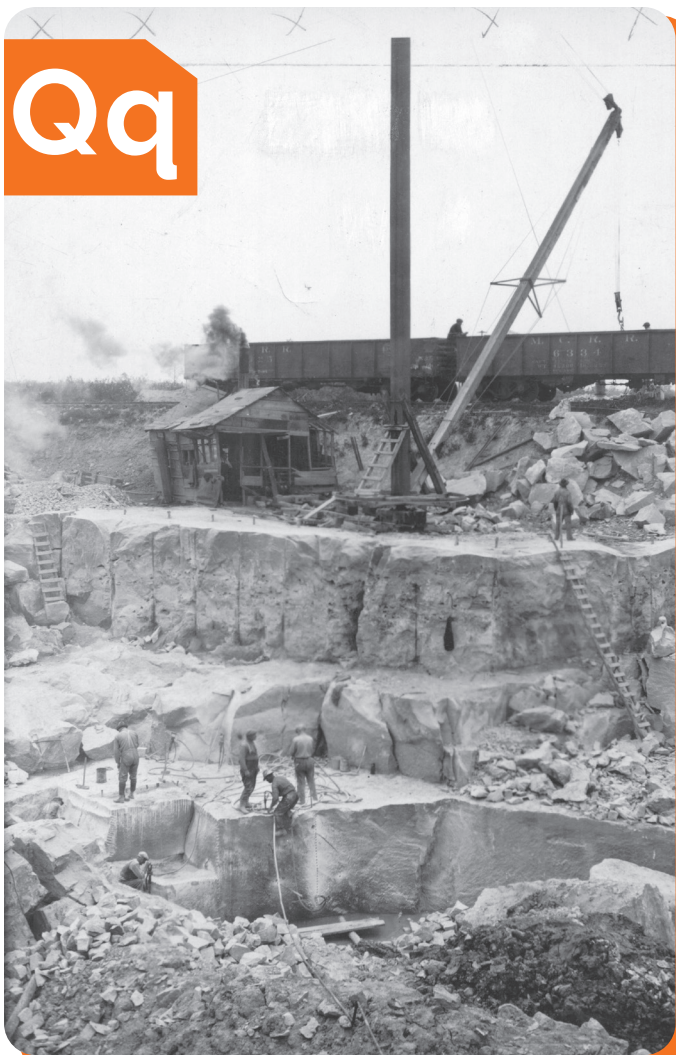
Pp



Aubrey Falls sits in a provincial park on the traditional territory of the Mississauga First Nation in Northern Ontario. It is the largest waterfalls in the Lake Huron watershed with approximately 25 different chutes running through granite, dropping 33 metres (108 feet) to the gorge below.

Picnickers at Aubrey Falls, 1952 (I0005525)

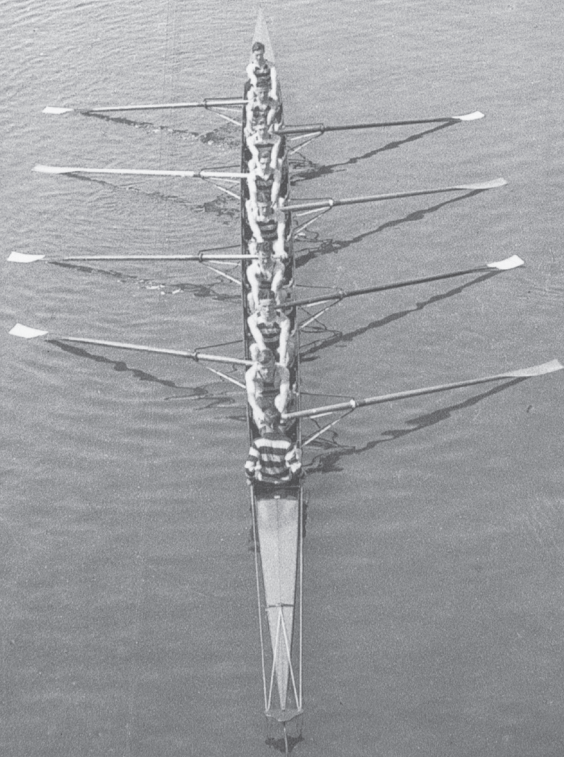
Qq



A quarry is an open mine where stone, rock, sand, gravel, or slate are excavated from the ground, often to be used in buildings and construction projects. These materials are often removed from one location for projects in other parts of Ontario or the world!

Stone being quarried for facing the new government administrative building in Queen's Park, Queenston Quarries Ltd., ca. 1925 (I0004701)

Rr



Rowing has been practiced in Ontario for over 150 years. The increase in European settlers and industrialization of Upper Canada in the mid-19th century created a class of men who had leisure time to practice rowing and wealth to gamble on races. By the turn of the 20th century, rowing in Ontario had expanded to allow for major inter-club regattas. Through the first half of the 1900s, Ontario rowers took the lead in representing Canada internationally at the Olympic Games.

An aerial view of the Argonauts Rowing Club
Junior eight-man boat, ca. 1925 (I0003678)

Rr**Rowing**

Ss



Used throughout Northern Ontario, Cree or Ojibway-style snowshoes are long and narrow and made from two wooden strips held together by intricate moose hide babiche (rawhide) lacing, making them ideal for walking through deep snow.

John Macfie's feet, harnessed to snowshoes in the Ojibway/Cree fashion, ca. 1951 (I0012781)

Ss**Snowshoe**

Tt

ST. CLAIR
TUNNEL CO

1305



In 1891 the St. Clair Tunnel Company opened the first underwater rail tunnel in North America, to transport cargo between Sarnia, Ontario, and Port Huron, Michigan. At first, steam trains pulled freight through the tunnel but by 1908 they were replaced by electric locomotives. The St. Clair Tunnel is still in use today!

Train in the St. Clair tunnel, 1909 (I0003389)

Tt

Tunnel

Uu





This photograph shows soldiers from the No. 2 Construction Battalion, some of whom came from Ontario. The Battalion was formed in Nova Scotia in 1916—the first large Black military unit in Canadian history. This segregated battalion included soldiers from across the country, and was given non-combat support roles throughout the war. While most returning soldiers were celebrated as heroes, the men of the “Black Battalion” didn’t receive proper recognition until decades later.

Soldiers, 1918 (I0024831)

Uu

Uniform

Vv



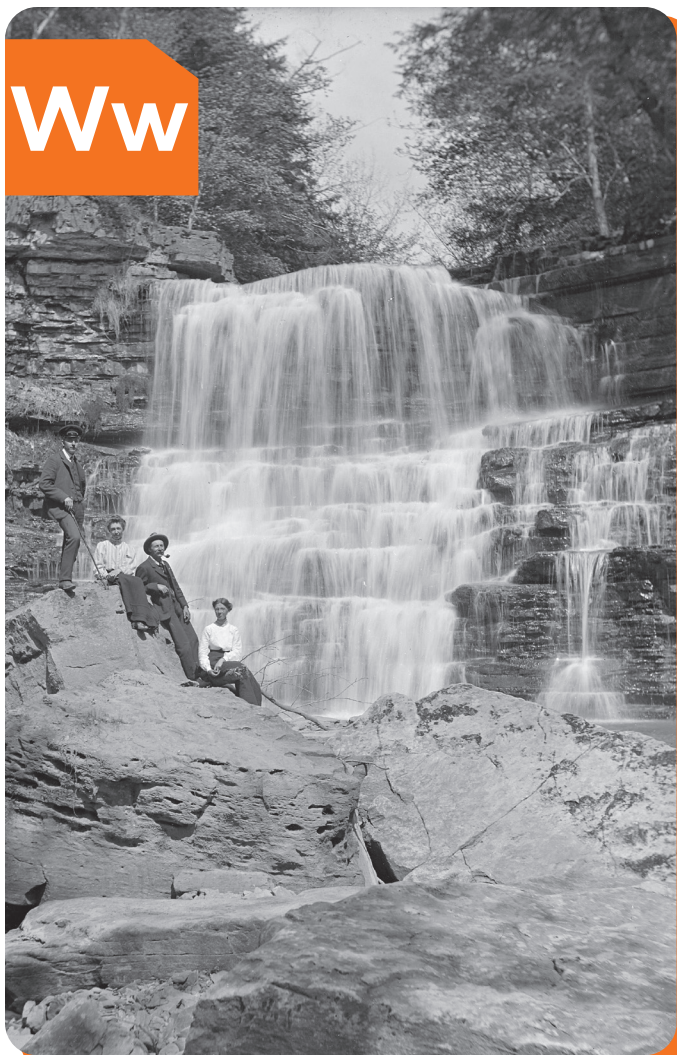
Lettuce (*Lactuca sativa*) is an annual plant of the daisy family. In Ontario, lettuce is grown in greenhouses all-year around, and in fields from June until October.

Woman holding several bags of lettuce in a lettuce greenhouse, July 12, 1983 (I0004479)

Vv

Vegetable

Ww



Located along the Twelve Mile Creek near the Niagara Escarpment, Decew Falls sits within the traditional territory of the Anishinaabe, Haudenosaunee, and (most recently) Mississauga of the Credit peoples. The waterfall is named after John DeCou, who purchased the land in 1788. Throughout the 19th and 20th centuries, the creek was redirected to support the Welland Canal and a nearby hydroelectric generating station, drastically changing the appearance of the waterfall.

Family at Decew Falls, ca. 1920 (I0013688)

Ww

Waterfall

Xx



Projectional radiography is used in medicine to produce pictures of a patient by x-ray radiation, allowing radiologists and doctors to examine both the skeleton and soft tissues. Both the procedure and any resultant images are often simply called “x-rays”.

Two men viewing a chest x-ray at a Board of Health
laboratory, ca. 1928 (I0005238)

Xx**X-ray**

Yy





With the passing of the Slavery Abolition Act (1833) across the British Empire, Black Americans began making their way across the Detroit River from the United States into Canada. For several decades, the Sandwich area (today part of Windsor, Ontario) became home to generations of Black Canadians.

Augustus Adams in his front yard in Sandwich, 1906 (I0024810)

Yy

Yard

Zz



In 1894, Riverdale Zoo opened in Toronto's east end within the grounds of a city park. The collection of animals began with deer donated by a city alderman, and by 1902 the zoo had pheasants, ocelots, a camel, a dromedary, a buffalo, monkeys, a bear, lions, an elephant, and a hippopotamus.

The elephants at the Riverdale Zoo, Toronto, 1923 (I0003651)

Zz

Zoo